

Mechanical Seals for Sanitary Pumps

HM EMLL

- **EMLL Seals used for E.M.U Pumps and Mixers.**

- **Operational Conditions:**

Temperature: -40°C to $+200^{\circ}\text{C}$

Pressure: $\leq 1.2\text{MPa}$

Speed: $\leq 20\text{m/s}$

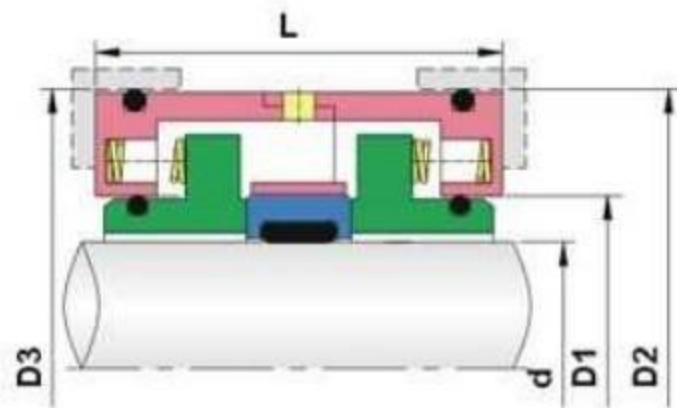
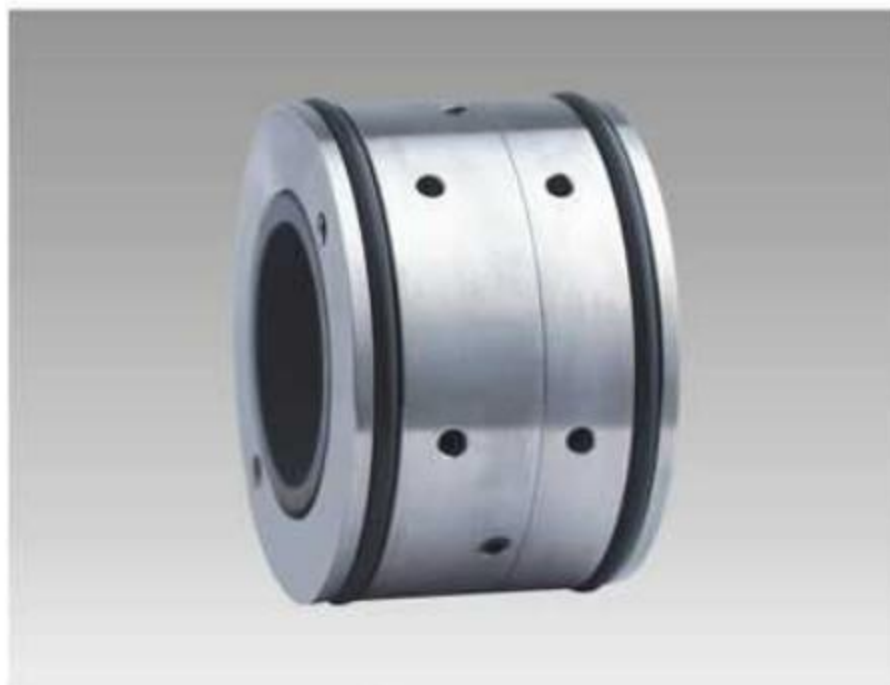
- **Materials:**

Stationary Ring: F, Q2

Rotary Ring: Q2, U2

Secondary Seal: V, E, P

Spring and Metal parts: F, G



规格/Size (公制/Metric)	Code	D1	D2	D3	L
35	0.350	47	72	72	47
50	0.500	63	90	92	52
75	0.750	95	128	130	75