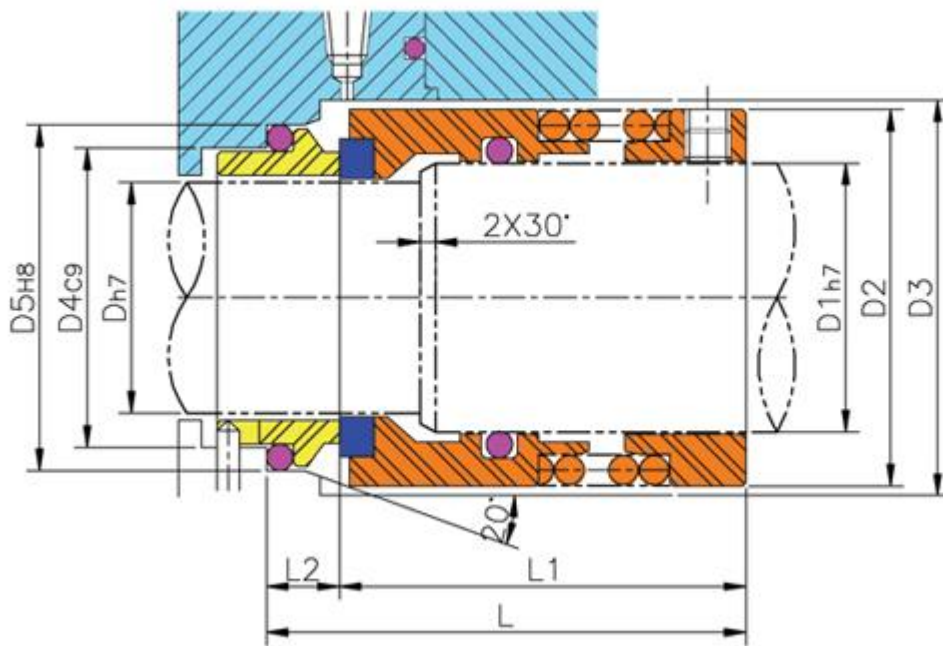


# HMSBNC



## Operating Limits

- Balanced seal
- Pressure : Up to 30kg/cm<sup>2</sup>
- Temperature : -30°C~250°C
- Velocity : 15m/sec
- Viscosity : 300,000CP
- Slurry : Up to 7%



### SBNC Fitting Dimension (mm)

MODEL	D	D1	D2	D3	D4	D5	L	L1	L2
SBNC-20	20	24	36	40	40	46	68.5	45.5	23
SBNC-22	22	26	40	42	42	48	68.5	45.5	23

SBNC-24	24	28	42	44	44	50	68.5	45.5	23
SBNC-25	25	30	44	46	46	52	68.5	45.5	23
SBNC-28	28	33	46	49	49	55	76	53	23
SBNC-30	30	35	48	51	51	57	76	53	23
SBNC-35	35	40	54	60	60	66	75.5	50.5	25
SBNC-38	38	43	57	63	63	69	82.5	57.5	25
SBNC-40	40	45	60	65	65	71	82.5	57.5	25
SBNC-45	45	50	65	70	70	76	76.5	51.5	25
SBNC-48	48	53	69	73	73	79	86.5	61.5	25
SBNC-50	50	55	71	75	75	81	91.0	66	25
SBNC-55	55	60	78	85	85	91	89	61	28
SBNC-58	58	63	81	88	88	94	94	66	28
SBNC-60	60	65	83	90	90	96	104	76	28
SBNC-65	65	70	89	95	95	101	98.5	68.5	30
SBNC-70	70	75	95	104	104	110	102.5	72.5	30
SBNC-75	75	80	100	109	109	115	113.5	82.5	31
SBNC-80	80	85	107	114	114	120	113.5	82.5	31
SBNC-85	85	90	112	119	119	125	113.5	82.5	31
SBNC-90	90	95	119	124	124	130	113.5	82.5	31
SBNC-95	95	100	124	129	129	135	113.5	82.5	31
SBNC-100	100	105	128	134	134	140	113.5	82.5	31